

## 44 Bridge Street Sydney NSW

- Boutique office suite in premium location
- Large windows and excellent natural light
- Corner positioning with expansive views
- Open plan layout suitable for workstations
- Separate office area or private boardroom
- Quality office furniture available if required
- Internal kitchenette with fridge and storage
- Internal bathroom amenities incl. shower
- Existing data connections, NBN compatible
- Independently controlled air conditioning
- Dual zoning also permits residential usage
- Iconic heritage building in superb location
- Opposite the new Quay Quarter Tower
- Surrounded by Sydney's finest restaurants
- Minutes to Circular Quay and Wynyard St.

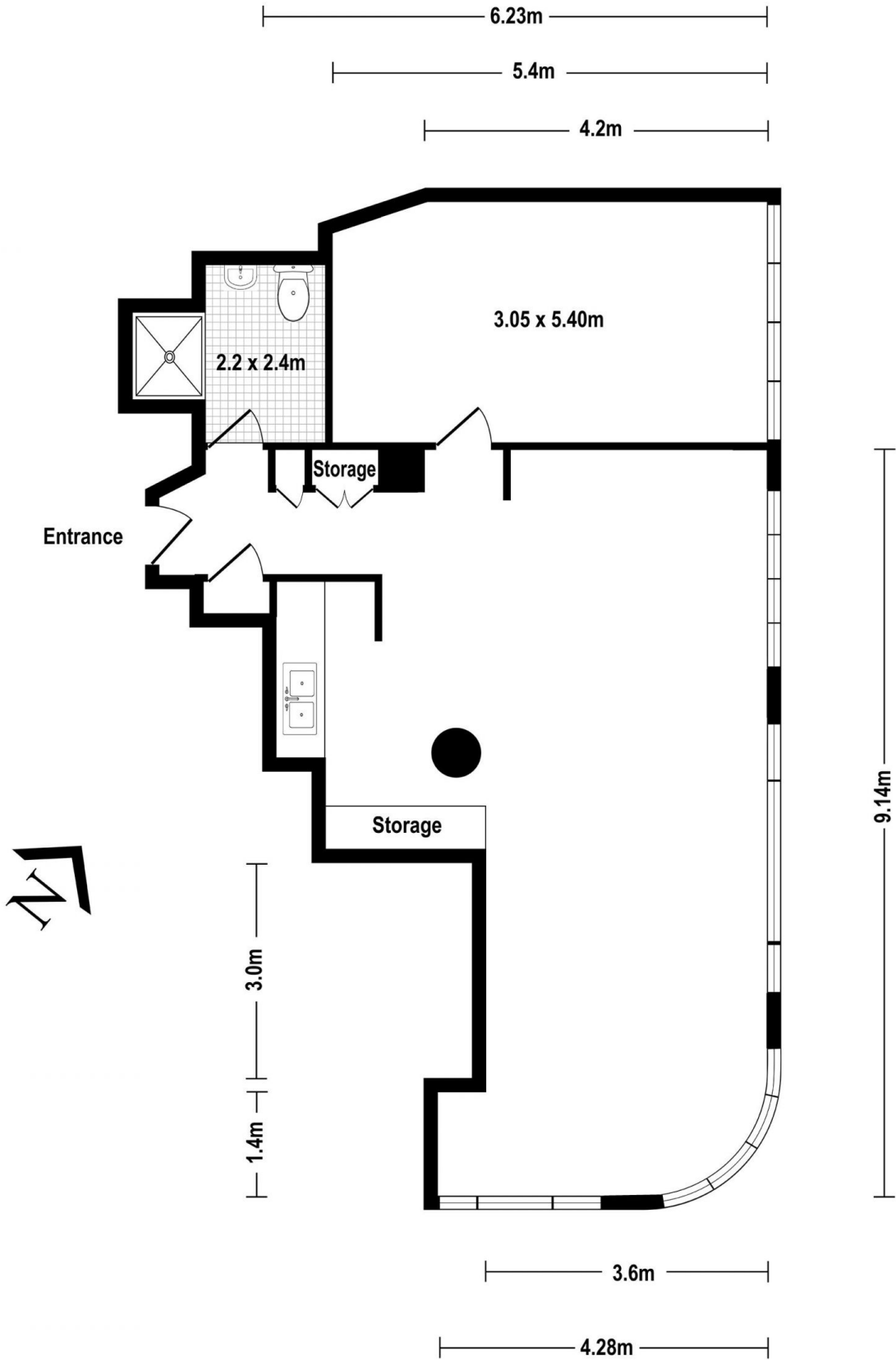
<b>Type</b>	: Offices
<b>Price</b>	: \$700/m2 Gross PA
<b>Building Size</b>	: 70 sqm
<b>Land Size</b>	: 70 sqm
<b>View</b>	: <a href="https://www.noonanproperty.com.au/lease/nsw/sydney-city/sydney/commercial/offices/8166147">https://www.noonanproperty.com.au/lease/nsw/sydney-city/sydney/commercial/offices/8166147</a>



**Tim Noonan**  
02 9231 6000

[For full version visit the website](https://www.noonanproperty.com.au)

# Suite 1, 44 Bridge Street SYDNEY



Approximate Total SQM - 66

This floor plan is intended as a guide only. Layout dimension are approximate only. No representation or warranties of any nature whatsoever are given or intended. Any person using this information should rely on their own enquiries.