



501/70 Pitt Street Sydney NSW

Noonan Property Sydney are pleased to offer for lease this modern and impressive commercial suite comprising 65 sqm in a quality commercial building located at 70 Pitt Street, Sydney.

This superbly located property features modern interiors, high ceilings, forefront positioning, large windows, excellent natural light, prominent lift lobby exposure and attractive views overlooking Pitt Street.

Internally the property features a versatile fitout incorporating a reception and client meeting area, separate meeting rooms or executive offices and spacious open plan areas for multiple workstations. The property also features easy access to kitchen and bathroom amenities.

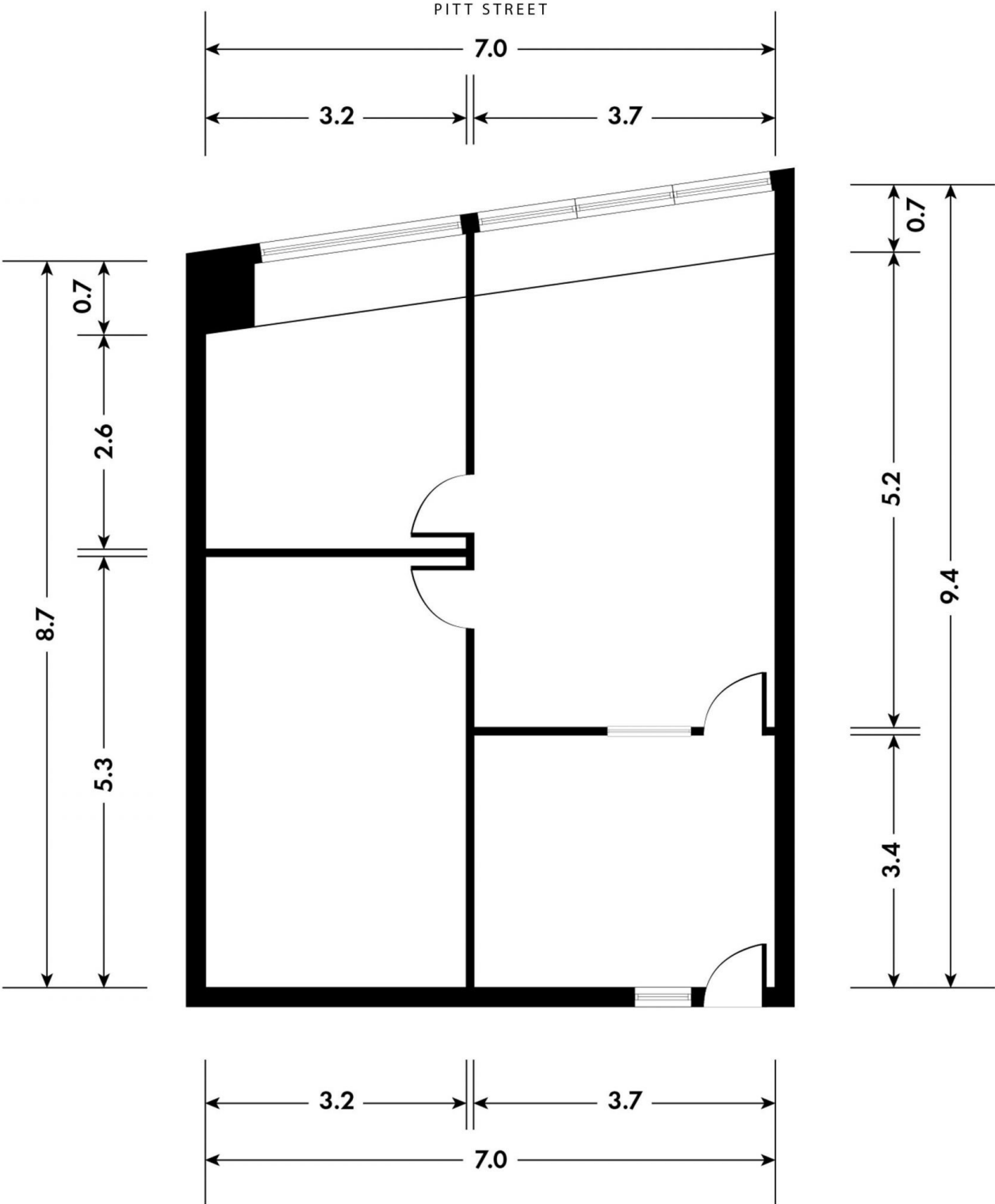
[For full version visit the website](https://www.noonanproperty.com.au/lease/nsw/sydney-city/sydney/commercial/offices/8160544)

Type	: Offices
Price	: \$650/m2 Gross PA
Building Size	: 65 sqm
Land Size	: 65 sqm
View	: https://www.noonanproperty.com.au/lease/nsw/sydney-city/sydney/commercial/offices/8160544



Tim Noonan
02 9231 6000

SUITE 501, LEVEL 5, 70 PITT STREET SYDNEY



*PLANS SHOWN ONLY INDICATIVE OF LAYOUT. DIMENSIONS ARE APPROXIMATE.

Floor plan supplied by V-Mark Design Pty Ltd. This floor plan is provided for indicative purposes only. Measurements are approximate and not to scale. The vendor, agency and supplier will accept no liability for its accuracy. Interested parties are advised to make their own independent enquiries.

NOONAN
PROPERTY