



12/67 Castlereagh Street Sydney NSW

Noonan Property Sydney are pleased to present for lease The Penthouse, Level 12, Culwulla Chambers, 67 Castlereagh Street, Sydney.

The Penthouse at Culwulla Chambers is a prestigious whole floor commercial property of unrivalled quality and uniqueness in a highly coveted location near Martin Place. This spectacular property features an exquisite atrium glass window façade and a large balcony terrace with awe-inspiring views overlooking the CBD skyline.

The Penthouse has been meticulously renovated and is available for lease as a whole floor or individual suites.

Level 12 - 380 sqm (whole floor)

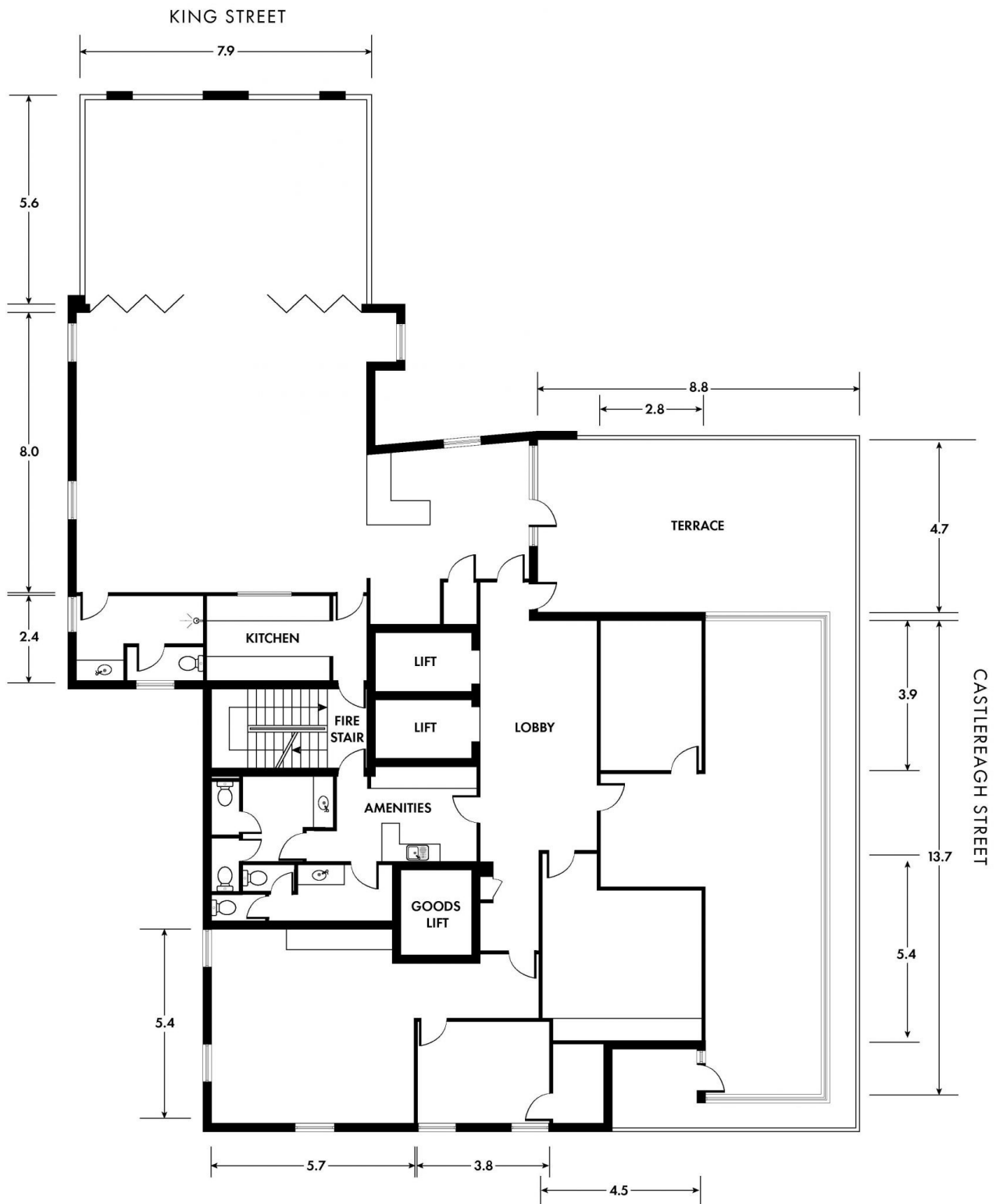
[For full version visit the website](https://www.noonanproperty.com.au/lease/nsw/sydney-city/sydney/commercial/offices/8153647)

Type : Offices
Price : Contact Agent
View : <https://www.noonanproperty.com.au/lease/nsw/sydney-city/sydney/commercial/offices/8153647>



Tim Noonan
02 9231 6000

THE PENTHOUSE - CULWULLA CHAMBERS,
67 CASTLEREAGH STREET SYDNEY

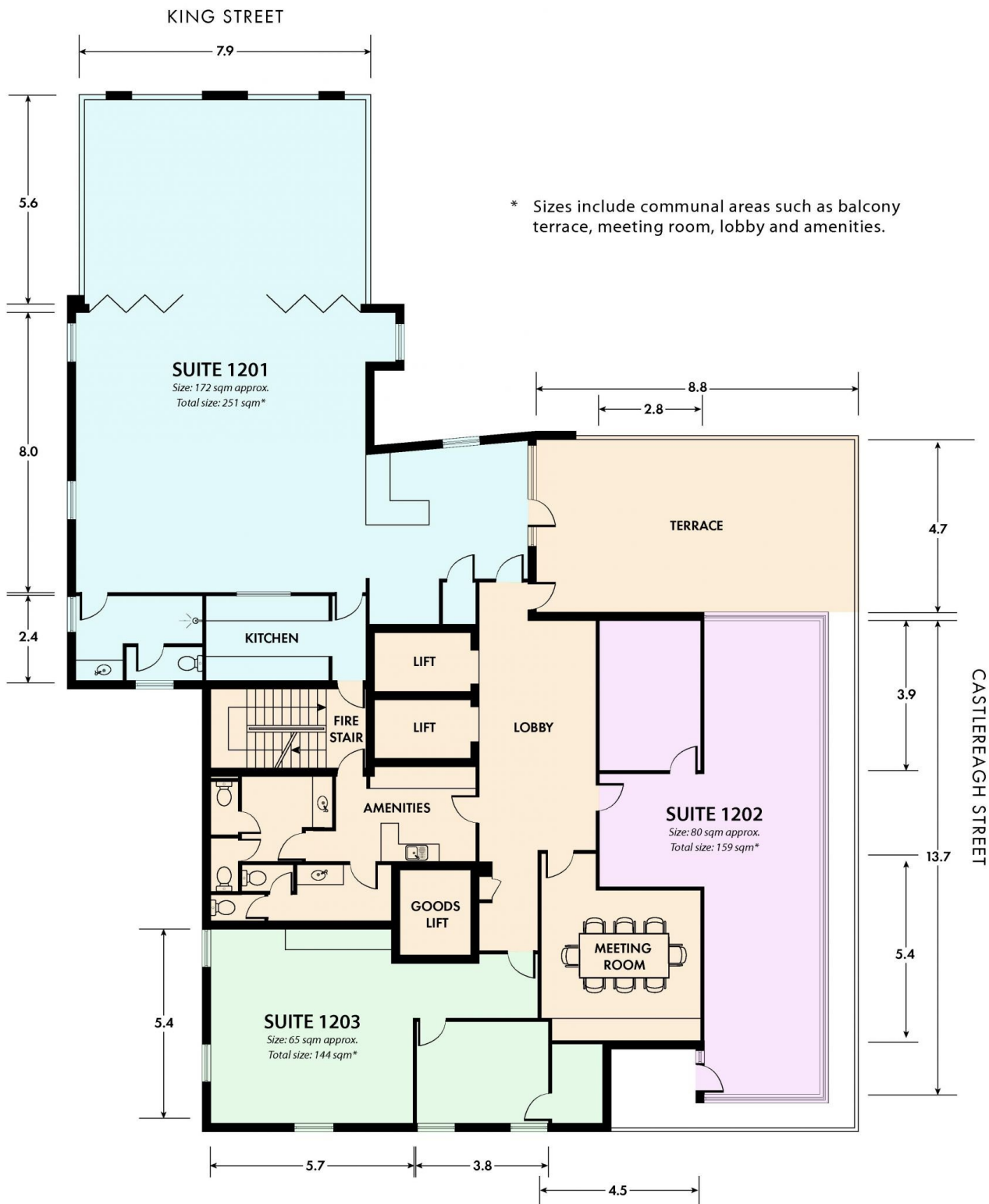


*PLANS SHOWN ONLY INDICATIVE OF LAYOUT. DIMENSIONS ARE APPROXIMATE.

This floor plan is provided for indicative purposes only. Measurements are approximate and not to scale. The vendor, agency and supplier will accept no liability for its accuracy. Interested parties are advised to make their own independent enquiries.

NOONAN
PROPERTY

THE PENTHOUSE - CULWULLA CHAMBERS, 67 CASTLEREAGH STREET SYDNEY



*PLANS SHOWN ONLY INDICATIVE OF LAYOUT. DIMENSIONS ARE APPROXIMATE.

This floor plan is provided for indicative purposes only. Measurements are approximate and not to scale. The vendor, agency and supplier will accept no liability for its accuracy. Interested parties are advised to make their own independent enquiries.

NOONAN
PROPERTY