



205/65 York Street Sydney NSW

Noonan Property are pleased to offer for lease this stylish and impressive commercial suite comprising 125 sqm in a dress circle location near Wynyard, Martin Place and Barangaroo.

This superbly located property features a quality fitout with bespoke interiors, high ceilings, timber flooring, halogen downlighting, floor to ceiling glass partitions and prime corner positioning with excellent natural light and attractive views overlooking York Street.

Internally the property features a stylish fitout incorporating an attractive reception and client meeting area plus five large rooms suitable for executive offices, consulting rooms or workspaces. The property also features a spacious

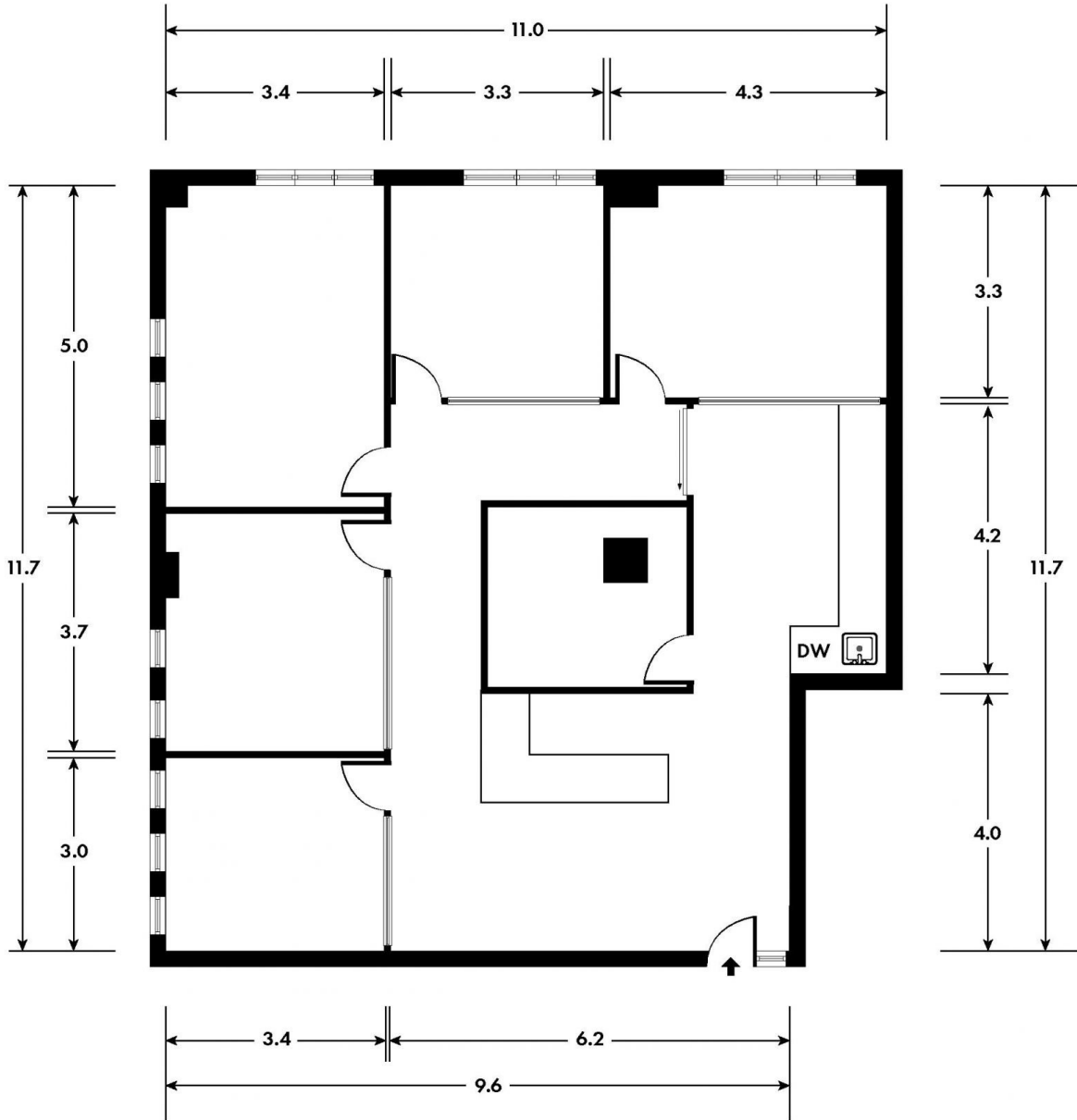
Type	: Offices
Price	: \$750/m2 Gross PA
Building Size	: 125 sqm
Land Size	: 125 sqm
View	: https://www.noonanproperty.com.au/lease/nsw/sydney-city/sydney/commercial/offices/8153315



Tim Noonan
02 9231 6000

[For full version visit the website](https://www.noonanproperty.com.au)

SUITE 205, 65 YORK STREET SYDNEY



*PLANS SHOWN ONLY INDICATIVE OF LAYOUT. DIMENSIONS ARE APPROXIMATE.
Floor plan supplied by V-Mark Design Pty Ltd. This floor plan is provided for indicative purposes only. Measurements are approximate and not to scale. The vendor, agency and supplier will accept no liability for its accuracy. Interested parties are advised to make their own independent enquiries.

NOONAN
PROPERTY