



## 604/447 Kent Street Sydney NSW

1 

- Modern and impressive commercial suite
- Corner positioning with 2 window frontages
- Large windows and excellent natural light
- Attractive fitout with renovated interiors
- Open plan workspaces plus 1 meeting room
- Easy access to kitchen and bathroom facilities
- Prominent commercial building with 4 lifts
- Onsite parking and shower facilities available
- Communal rooftop BBQ area with great views
- Highly coveted CBD location near Town Hall
- Close to Gadigal Metro Station and QVB
- Minutes to Barangaroo and Darling Harbour

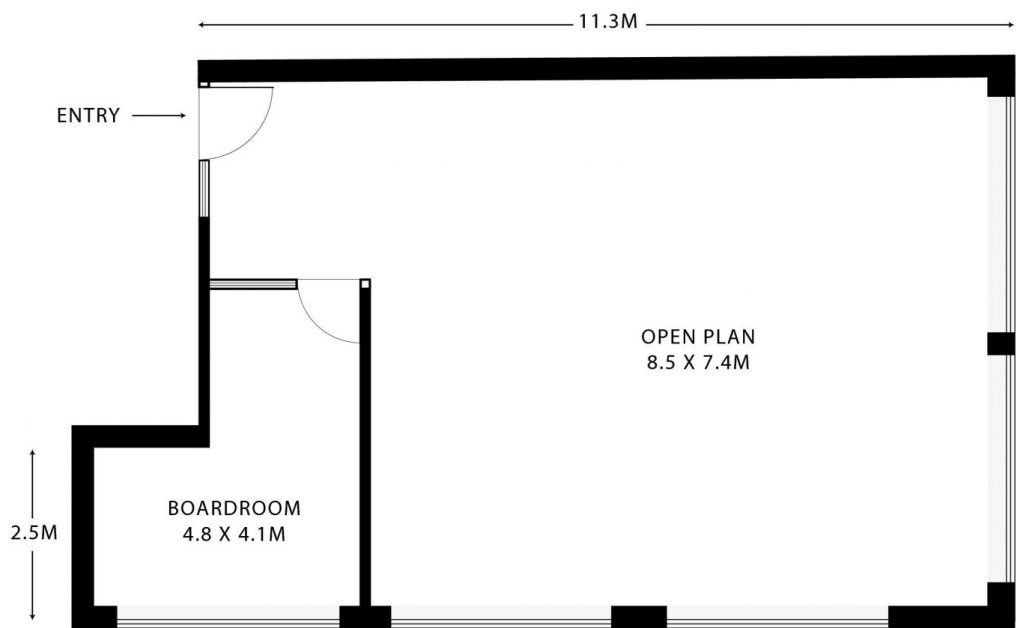
Size - 88 sqm + 1 car space (if required)

<b>Type</b>	: Offices
<b>Price</b>	: \$495/m2 Gross PA
<b>Building Size</b>	: 88 sqm
<b>Land Size</b>	: 88 sqm
<b>View</b>	: <a href="https://www.noonanproperty.com.au/lease/nsw/sydney-city/sydney/commercial/offices/8145197">https://www.noonanproperty.com.au/lease/nsw/sydney-city/sydney/commercial/offices/8145197</a>



**Tim Noonan**  
02 9224 6899

[For full version visit the website](https://www.noonanproperty.com.au)



\*PLANS SHOWN ONLY INDICATIVE OF LAYOUT. DIMENSIONS ARE APPROXIMATE.  
Floor plan supplied by V-Mark Design Pty Ltd. This floor plan is provided for indicative purposes only.  
Measurements are approximate and not to scale. The vendor, agency and supplier will accept no liability  
for its accuracy. Interested parties are advised to make their own independent enquiries.

**NOONAN**  
**PROPERTY**