



## 324/5 Lime Street Sydney NSW

1 

Noonan Property are pleased to offer for lease this world class office suite comprising 182 sqm and 1 security car space in a highly coveted location near Wynyard, Barangaroo and Darling Harbour.

This superbly located property within the King Street Wharf precinct features a quality fitout and recently renovated interiors together with an expansive three sided window frontage and spectacular harbour views, providing excellent natural light throughout the entire premises.

Internally the property features a stylish fitout and furniture package incorporating a reception and client meeting area, spacious boardroom, three executive offices or additional meeting rooms, separate storage and a spacious open plan

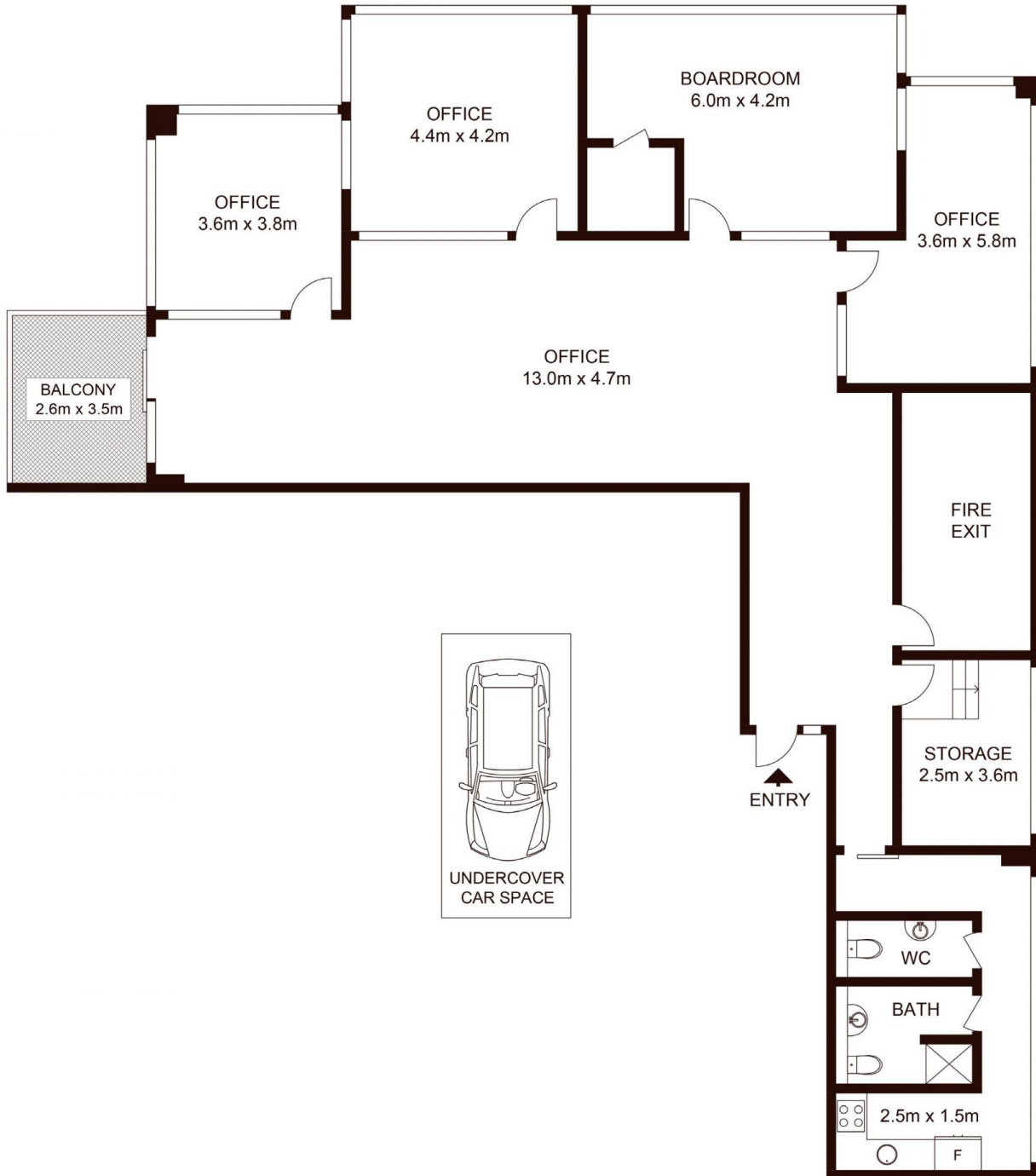
[For full version visit the website](#)

**Type** : Offices  
**Price** : \$900/m2 Gross PA  
**Building Size** : 182 sqm  
**Land Size** : 182 sqm  
**View** : <https://www.noonanproperty.com.au/lease/nsw/sydney-city/sydney/commercial/offices/8124293>



**Tim Noonan**  
02 9221 6000

# SUITE 324/5, 15 LIME STREET SYDNEY



0 1 2 3 4 5  
SCALE (METRES)

\*PLANS SHOWN ONLY INDICATIVE OF LAYOUT. DIMENSIONS ARE APPROXIMATE.  
Floor plan supplied by V-Mark Design Pty Ltd. This floor plan is provided for indicative purposes only. Measurements are approximate and not to scale. The vendor, agency and supplier will accept no liability for its accuracy. Interested parties are advised to make their own independent enquiries.

## NOONAN PROPERTY