

## 9/235 Macquarie Street Sydney NSW

Noonan Property Sydney has been exclusively appointed to offer for sale Suite 9, Beanbah Chambers, 235 Macquarie Street, Sydney.

Suite 9, Beanbah Chambers, 235 Macquarie Street, Sydney represents a rare opportunity to acquire an impressive, historic and esteemed commercial strata title suite comprising 80 sqm in one of Sydney's most admired heritage buildings near Martin Place and Hyde Park.

The property's elevated and expansive views overlooking Macquarie Street, St Mary's Cathedral, The Mint, The Domain, Woolloomooloo, NSW Parliament House, Sydney Harbour and Sydney Hospital are awe-inspiring and exclusive to a limited number of high-rise floors within the

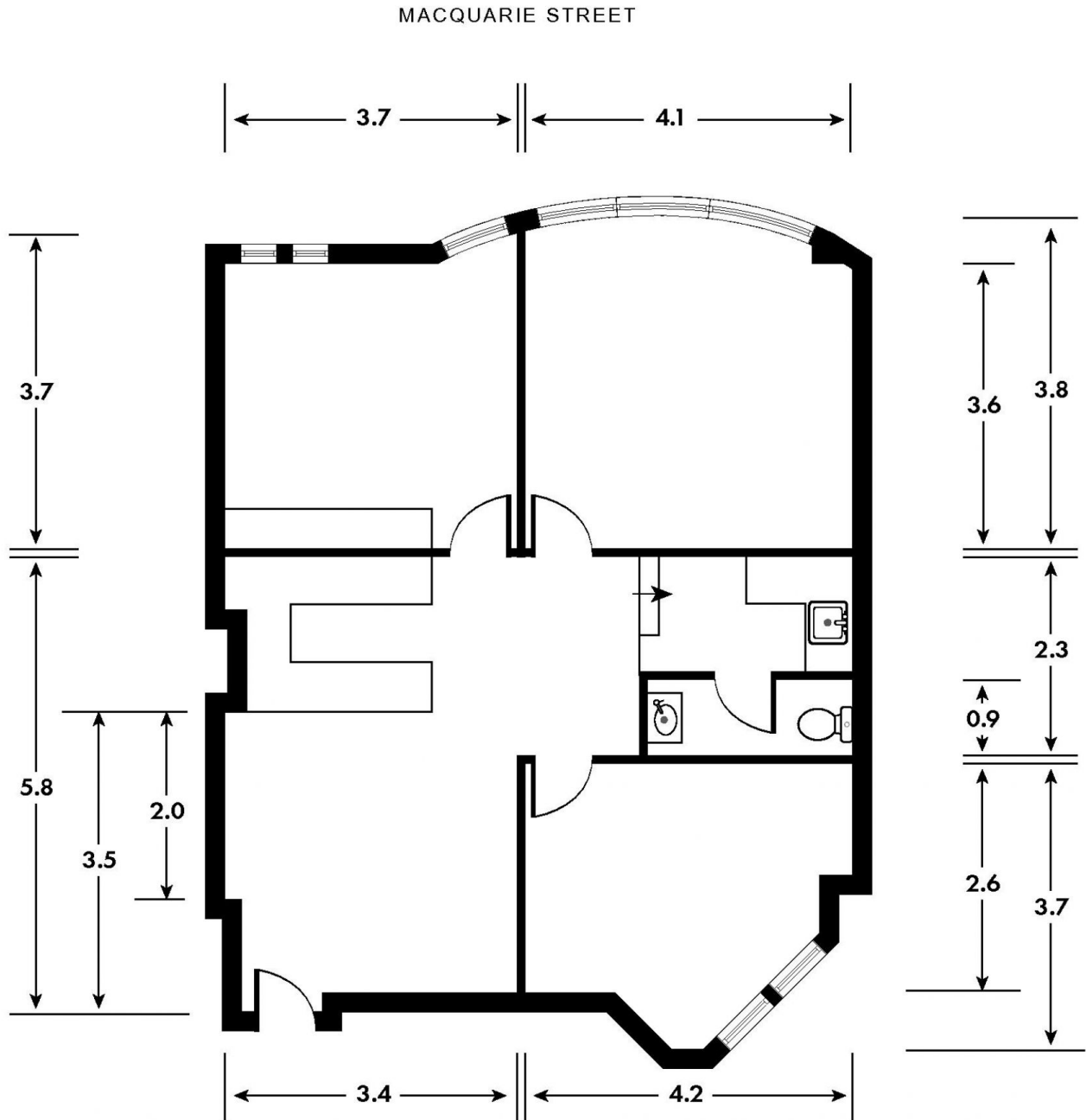
<b>Type</b>	: Offices
<b>Price</b>	: \$1,495,000
<b>Building Size</b>	: 80 sqm
<b>Land Size</b>	: 80 sqm
<b>View</b>	: <a href="https://www.noonanproperty.com.au/sale/nsw/sydney-city/sydney/commercial/offices/8111015">https://www.noonanproperty.com.au/sale/nsw/sydney-city/sydney/commercial/offices/8111015</a>



**Tim Noonan**  
02 9231 6000

[For full version visit the website](https://www.noonanproperty.com.au)

# SUITE 9, 235 MACQUARIE STREET SYDNEY



\*PLANS SHOWN ONLY INDICATIVE OF LAYOUT. DIMENSIONS ARE APPROXIMATE.  
Floor plan supplied by V-Mark Design Pty Ltd. This floor plan is provided for indicative purposes only. Measurements are approximate and not to scale. The vendor, agency and supplier will accept no liability for its accuracy. Interested parties are advised to make their own independent enquiries.

**NOONAN**  
**PROPERTY**