



25 Shelley Street Sydney NSW

2 🚗

Noonan Property Sydney are pleased to offer for lease a spectacular ground floor retail or commercial space comprising 305 sqm plus 2 car spaces within the prestigious King Street Wharf and Barangaroo precinct.

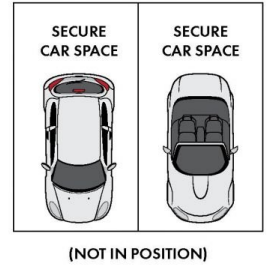
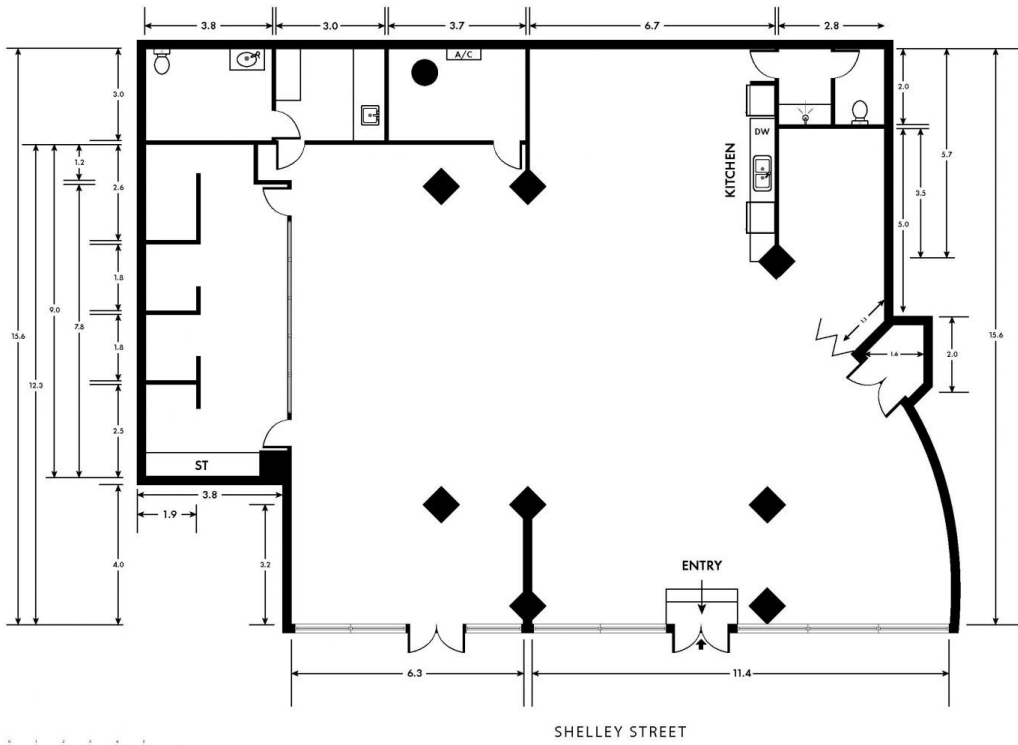
This exceptional property features an expansive street frontage, ground floor positioning, direct access to Shelley Street, ultra high ceilings and is situated in a highly coveted location near Barangaroo, Darling Harbour, Sydney CBD, Wynyard Station and the Barangaroo Metro Station scheduled to open in 2024.

Internally the property has been stylishly designed as a showroom for a leading office furniture supplier and is ideally suited for retail, office or showroom purposes. The property's high quality fitout features exposed ceilings, LED track lighting and a combination of quality floor coverings

Price : \$800/m2 Gross PA
Building Size : 305 sqm
Land Size : 305 sqm
View : <https://www.noonanproperty.com.au/lease/nsw/sydney-city/sydney/commercial/retail/8016585>



Tim Noonan
02 9231 6000



*PLANS SHOWN ONLY INDICATIVE OF LAYOUT. DIMENSIONS ARE APPROXIMATE.
 Floor plan supplied by K-Mark Design Pty Ltd. This floor plan is provided for illustrative purposes only.
 Measurements are approximate and not to scale. The vendor, agency and supplier will accept no liability
 for its accuracy. Interested parties are advised to make their own independent enquiries.

**NOONAN
 PROPERTY**