



300 George Street Sydney NSW

- Modern and attractive commercial suite
- Large windows overlooking George Street
- Excellent location opposite Wynyard
- Internal wet kitchen area
- Freshly painted and timber floors
- Plenty of natural light
- Regular and efficient floor plan
- Ducted air conditioning system
- Direct and prominent lift lobby exposure
- Modern and stylish CBD building and lobby
- Prestigious and high profile northern CBD location
- Close to Wynyard, Martin Place and Circular Quay
- Positioned between Hunter Street and Martin Place

Size - 65m² approx.

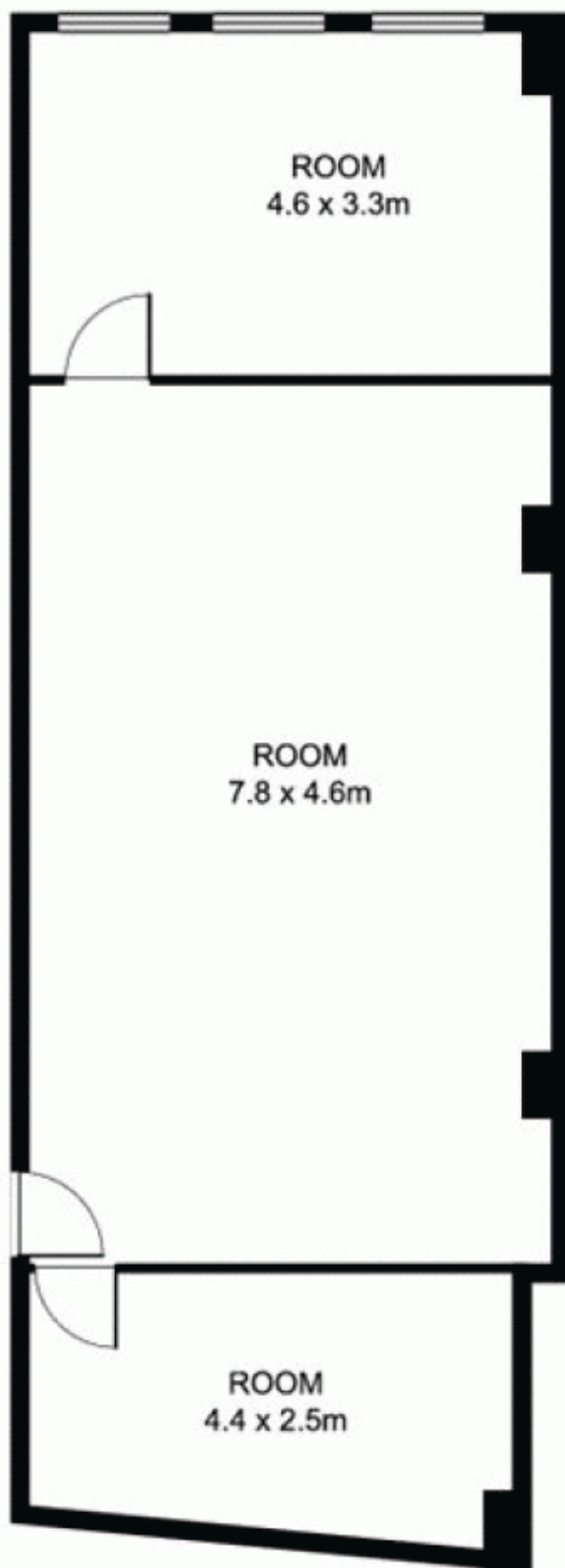
Rental - \$3250 per month plus GST

Building Size : 65 sqm
View : <https://www.noonanproperty.com.au/lease/nsw/sydney-city/sydney/commercial/offices/5998722>



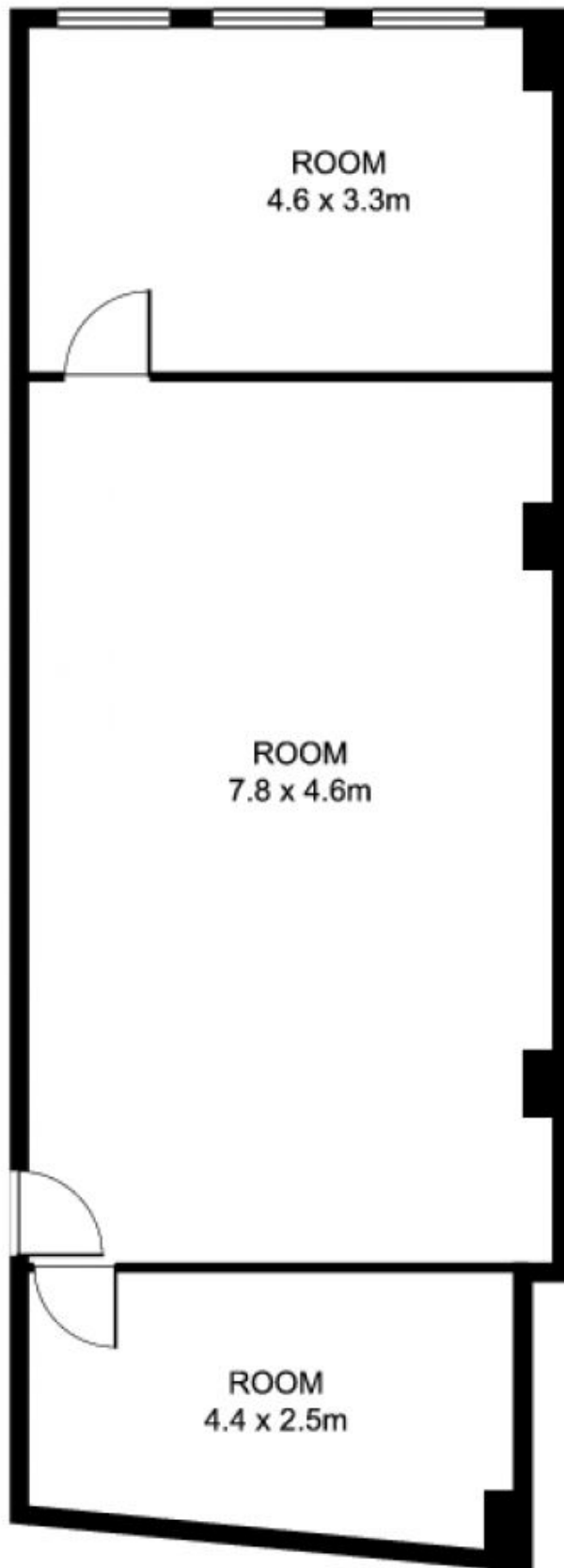
Tim Noonan
02 9231 6000

Suite 13, Level 4
300 George Street, SYDNEY



This floor plan is intended as a guide only. Layout dimensions are approximate only. No representations or warranties of any nature whatsoever are given or intended. Any person using this information should rely on their own enquiries

Suite 13, Level 4
300 George Street, SYDNEY



This floor plan is intended as a guide only. Layout dimensions are approximate only. No representations or warranties of any nature whatsoever are given or intended. Any person using this information should rely on their own enquiries